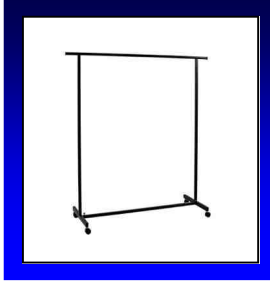
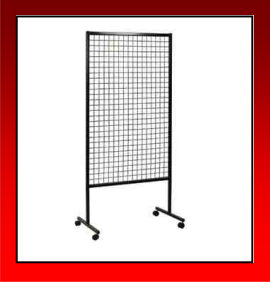
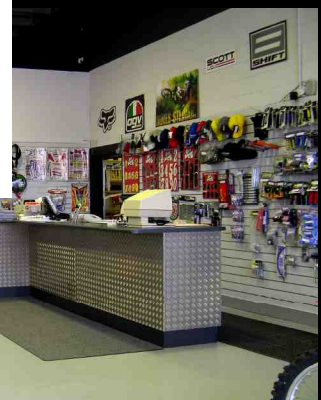
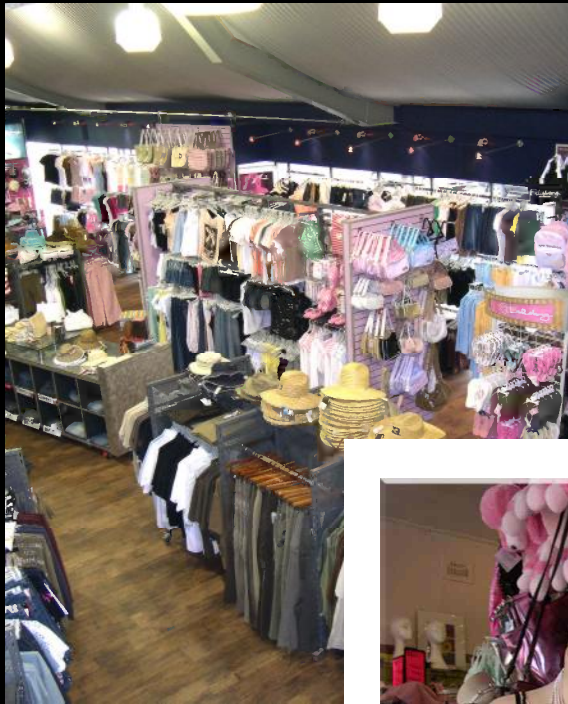


Southern Visual Concepts

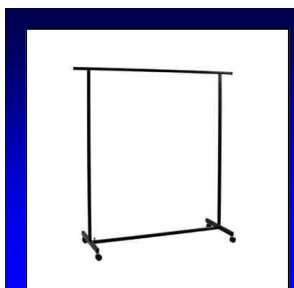
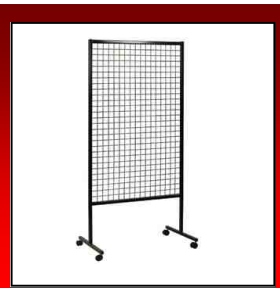
Shopfittings Catalogue











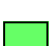
~ 2012 ~





Contents



-  4-5 Grooved Wall & Fittings
-  6-8 Post & Rail
-  9-10 Mannequins
-  11 Ancillary
-  12 Wire/ Mesh
-  13 Hangers
-  14 Jewellery
-  15 Racks
-  16-17 Cable System
-  18-19 Brochure System
-  20 Gondolas & Showcases

Grooved Wall



HG7-1

Ring Bracket to Fit 25mm Diameter Tube.
Chrome



HG2-1

Stepped Arm
365mm
Chrome

HG7-2

Cantilever Shelf Bracket for Glass Shelves
Chrome



HG2-2

Waterfall Bag Arm
With 5 Hooks,
400mm long
Chrome

HG7-6

Shelf Brackets Available in Sizes From 150mm to 350mm.
Chrome



HG2-3

Waterfall Arm With 6 Balls
Also Available With Pins.
400mm
Chrome

HG5-1

Mesh Basket Small
250 x 180 x 120mm
Also available in Large
Chrome



HG2-4

Straight Arm
Sizes Come in 300mm and
400mm
Chrome

HG9-3

Prong Hooks
Available in Sizes From 100mm
to 300mm
Chrome



HG18-1

Hat Ring
150mm Diameter
Chrome

IG17-2

Side Hang Rails
Available in 600mm, 900mm &
1200mm.
Chrome



HG18-3

Double Ball Ring
Also Available as a Single Ball
Ring.
Chrome

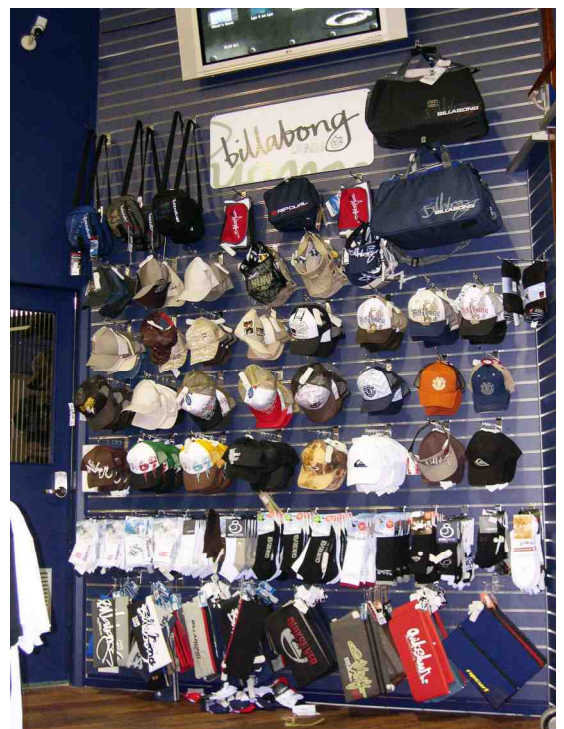


Grooved Wall



We supply all the fittings and components for grooved wall and can assist you with your shop design and layout.

At Southern Visual Concepts, Grooved Wall is manufactured in our factory and is available in White, Raw MDF or to the Colour of your choice.





Post & Rail



HP17-2

Crossbar
Available in 600mm, 900mm or 1200mm.
Chrome



HP2-1

Straight Arm
Sizes Come in 300mm and 400mm
Chrome

HP17-4

Side Hang Rails
Available in 600mm, 900mm & 1200mm.
Chrome

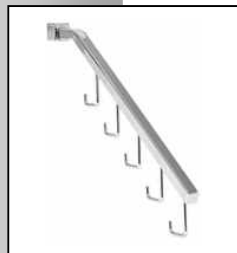


HP2-3

Waterfall Arm With 6 Balls
Also Available With Pins.
400mm
Chrome

HP7-7

Shelf Brackets 285mm
Available in Chrome, Black.



HP2-4

Waterfall Bag Arm
With 5 Hooks,
400mm long
Chrome

HP9-3

Prong Hooks
Available in Sizes from 100mm to 300mm
Chrome

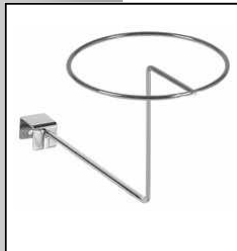


HP2-5

Stepped Arm
365mm
Chrome

HP16-6

Upright Post Offset from Wall.
2400mm high
Available in Chrome, Black, or with a Timber Trim.



HP18-1

Hat Ring
150mm Diameter
Chrome

HP16-7

H-Frame Gondola
1290 x 630 x 1270mm High

Chrome



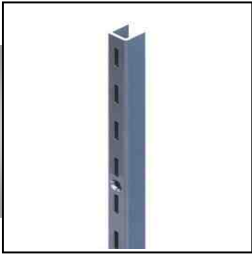
HP16-8

H-Frame Gondola
1290 x 630 x 1270mm High

Chrome with Mahogany Trim



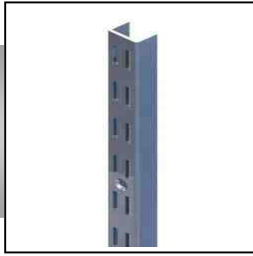
Post & Rail



HP16-2

Single Slot Stripping
Sizes come in 1500, 1780, 2100
or 2380mm Lengths

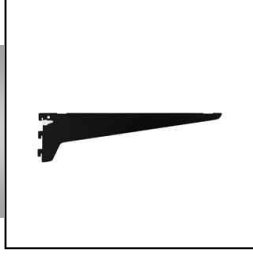
Chrome, Black or White



HP16-4

Double Slot Stripping
Sizes come in 1500, 1780, 2100
or 2380mm Lengths

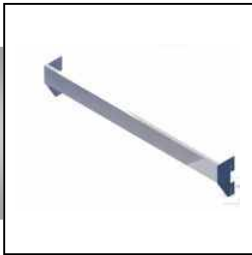
Chrome, Black or White



HP7-10

Stripping Shelf Brackets
Sizes come in 200, 250, 300, 350
and 400mm lengths.

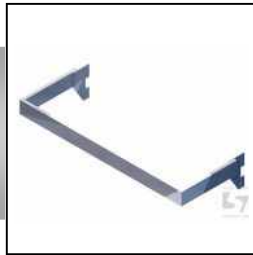
Chrome, Black or White



IP17-1

Wall Stripping Crossbar to fit
Arms and Prong Hooks
600, 900 and 1200mm

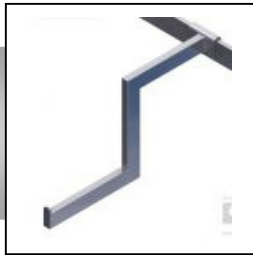
Chrome



IP17-5

Wall Stripping Side Hang Rail
600, 900 and 1200mm

Chrome



IP2-1

Wall Stripping Stepped Arm
370mm

Chrome



IP2-2

Wall Stripping Straight Arm
300mm or 400mm

Chrome



IP2-3

Wall Stripping Waterfall Arm
400mm with 6 Pins

Chrome



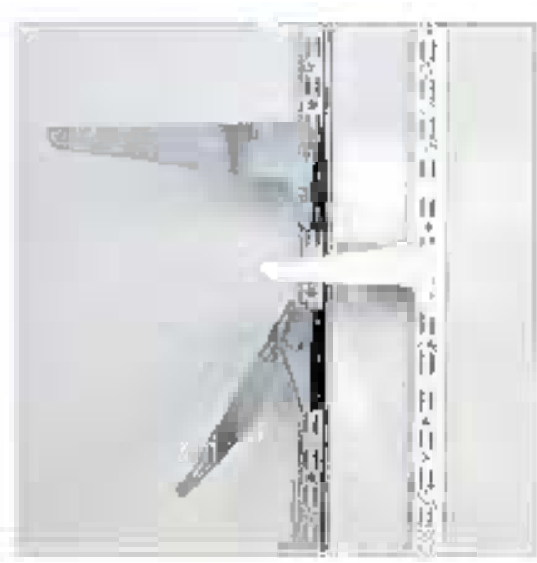
IP9-1

Wall Stripping Prong Hook
100, 150 and 200mm

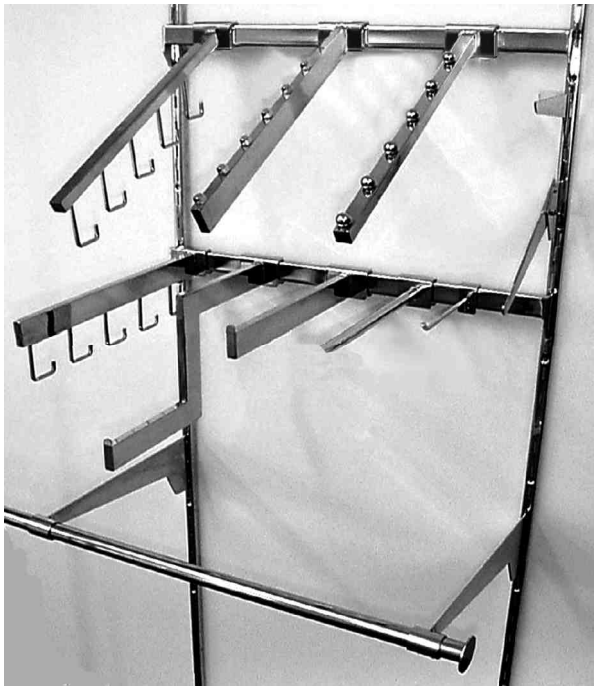
Chrome



Post & Rail



An alternative wall display system to Grooved Wall. Post and Stripping Systems can be connected to your Shop Wall which can maximise use of your shops height and free up valuable floor space.





Mannequins



HM22-4

M-L Male Torso 880mm High
Also Available in S-M 790mm High
Black, Skintone & White



HM6-3

8-10yr Child Bodyform with Hanging Hook.
Available in Black, Skintone, White & Transparent.

HM22-10

8-10yr Child Torso 710mm High
Available in Black, Skintone & White



HM6-5

10-12 Female Bodyform with hanging hook.
Available in Black, Skintone, White & Transparent.

HM22-11

16+ Female Torso
900mm high
Skin



HM6-9

M-L Male Bodyform with hanging hook.
Available in Black, Skintone, White & Transparent.

HM22-12

10-12 Female Torso 800mm High. Also available in 8-10 790mm High
Black, Skintone & White



HM4-1

Base for Torso's
Available in Black, White or Beech.

HM8-3

Male Foam Head
Available in Female & Child
White



HM12-6

Child Mannequin
1340mm High
Pink or Blue

HM8-4

Medium Wire Display Head
Also available in Short & Tall
Brass or Chrome

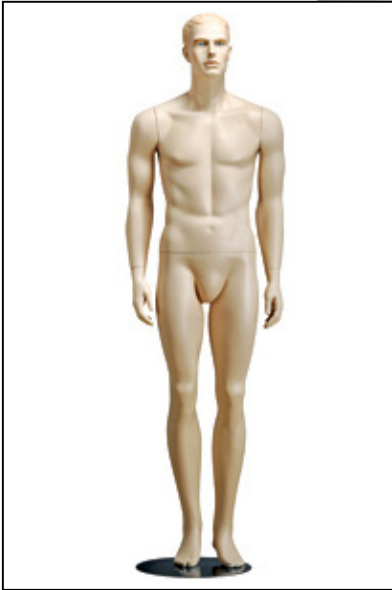


HM12-7

Child Mannequin
1340mm High
Pink or Blue



Mannequins



HM12-2

'Clark' Mannequin
1860mm High

Skintone



HM12-3

'James' Mannequin
1860mm High

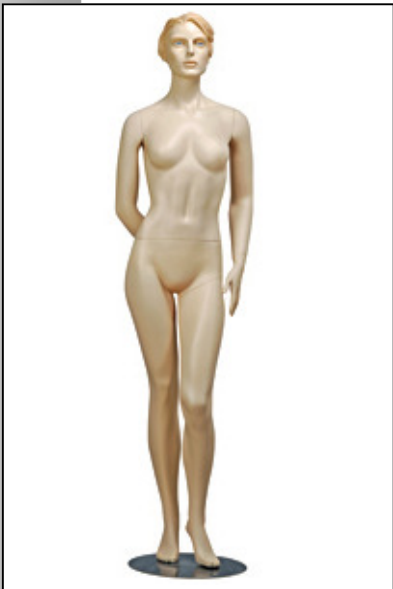
Skintone



HM12-4

'Wendy' Mannequin
1750mm High

Skintone



HM12-5

'Lily' Mannequin
1830mm high

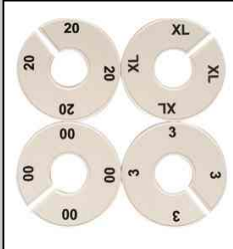
Skintone

Ancillary



HA-3

Security Mirror
Available in 450mm or 600mm
Diameter



HA1-1

Plastic Size Dividers
Sizes S-XXL & 000-48
White or Blank

HA-7

25mm End Cap for Chrome
Tube
Black



HA17-1

25mm Diameter Chrome Tube.
Available in 900, 1200, 1800,
2400, 3600.

HA-8

32mm End Cap for 25mm
chrome tube.

Black



HA20-2

G-Clamp for ticket Frame stems.
Fits square and round tube.
Chrome

HA3-10

Large Paper Bag
Pack of 100-Size S,M,L
& Boutique
Available in Brown or White



HA20-3

Saddle for 25mm square rail for
ticket frames and stems.
Chrome

HA3-16

Medium Paper Bag
Pack of 100-Size S,M,L
Available in Black or White
Gloss



HA20-4

Metal Stem for Ticket Frames
Available in 75mm & 150mm
Chrome

HA7-3

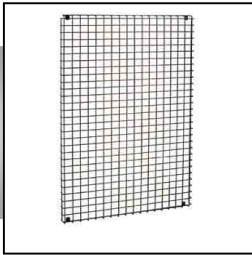
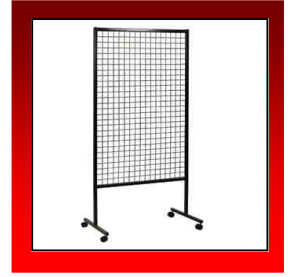
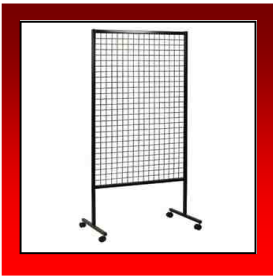
Double Sided Shelf Support
which clips onto a shelf bracket.
Available in single sided
Clear Acrylic



HA20-8

Metal Ticket Frame
A4 Landscape
Available in Portrait

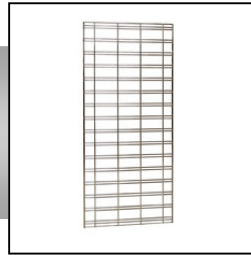
Wire / Mesh



HW-2

Mesh Wall-Mount Panel
850 x 1450mm

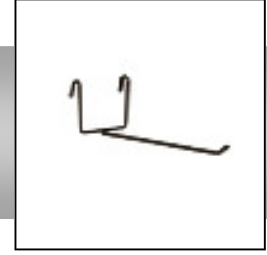
Available in black, White or Chrome



HW-6

Slotmesh Panel
1800, 1500 or 1200 by 600mm wide.

Fits all Grooved Wall Fittings
Chrome



HW9-4

Mesh Prong Hook
Available in sizes from 75mm to 250mm long.

Black, White or Chrome



HW5-1

Collapsible Dump Bin with Adjustable Shelf.

590mm square x 760mm high
Also in 460mm square
Black or White



HW5-6

6 Basket Unit on Castors
Baskets adjust to Straight or Angled.

Black or White



HW2-1

Mesh Waterfall Arm
400mm Long

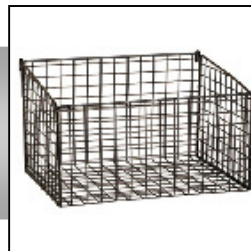
Black, White or Chrome



HW2-2

Mesh Straight Arm
300mm Long

Black, White or Chrome



HW7-2

Mesh Basket
350 x 260 x 200mm High
Also in
250 x 180 x 120mm High

Black, White or Chrome



HW17-1

Mesh Side Hang Rail
780mm with a 25mm diameter Rail.

Black, White or Chrome.



Hangers



HH-1

T-Shirt and Top Display
With Bendable Shoulders

Black & Chrome



HH13-2

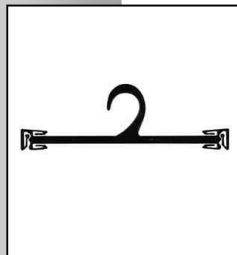
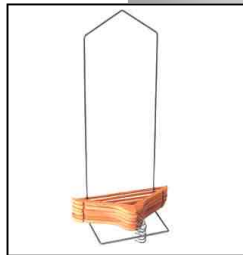
Large Suit Hanger
455mm With Rail

Black

HH-2

Standard Hanger Tidy
Fits 50-100 Hangers

Chrome



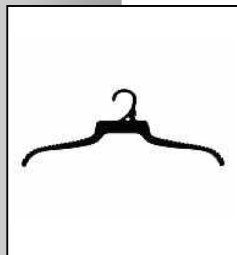
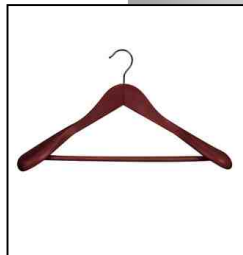
HH13-4

Lingerie/ Bikini Hanger
210 mm or 260mm wide

Clear or Black

HH21-3

Deluxe Timber Hanger
With Formed Shoulders
450mm
Beech, Mahogany



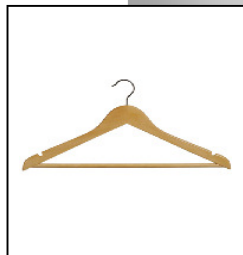
HH13-9

Plastic Knitwear Hanger
460mm With Grooves

Black or White

HH21-4

Timber Hanger with Flat Profile
& Notches.
440mm Wide
Beech



HH13-11

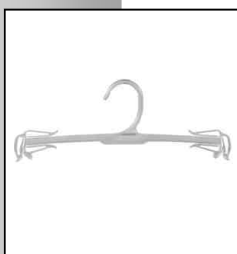
Clip Hanger With Push
Down Clips 310mm Wide

Black or White

HH23-1

Deluxe Metal Clip Hanger
290mm

Black



HH13-13

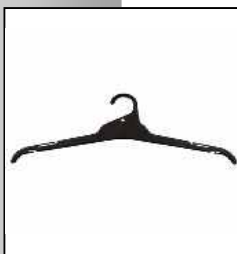
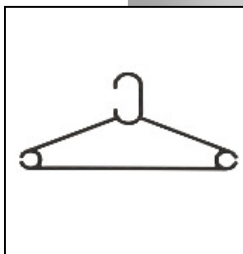
Deluxe Lingerie/ Bikini Hanger
250mm Wide

Clear

HH13-1

'Chic' Top Hanger
420mm With Notches

Black or White



HH13-14

Longlife Top Hanger
450mm Wide with Notches

Black or White

Jewellery



HJ19-1

Large Sculpted Bust
200mm x 360mm high

Black or White

HJ19-2

Sculpted Hand & Wrist
230mm High

Black or White

HJ19-3

Small Sculpted Neckline
200mm x 180mm High

Black or White



HJ-3

2-Tier Accessories Display
460-600mm Adjustable
Height

Chrome

HJ-4

3-Tier Display with
Removeable Rods

Copper

HJ-6

Combination Display for
Necklaces and Earrings

Copper



HJ-7

Accessories Stand with
10 Double Sided Hooks

Copper

HJ10-1

Large Jewellery Bust
270mm High

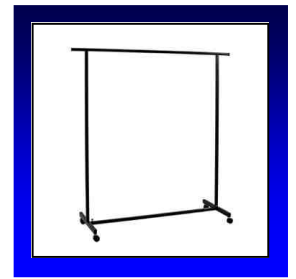
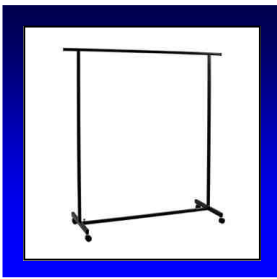
Black or White

HJ11-2

3-Tier Bracelet Display
300mm x 270mm High

Black or White

Racks



HR-2

HR-5

HR-8

Standard Utility Rack
1550mm x 2000mm High

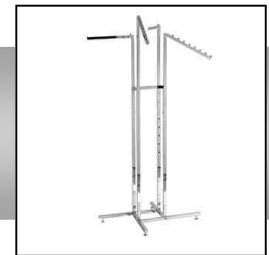
Round Rack with 4 Legs
940mm Diameter

Lingerie Rack
With 16 Adjustable
Straight Arms

Chrome or Black

Chrome

Chrome



HR-9

HR-10

HR-11

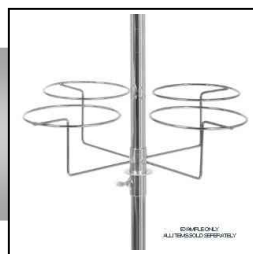
Spiral Rack
With 28 Hanging Positions

Collapsible Travellers Rack
1280mm Wide x 580mm Deep

4-Way Rack
(Arms sold Separately)
Arms: Straight, Waterfall,
Stepped and
Waterfall with Hooks
Chrome

Chrome

Chrome



HA-11

HR18-2

HR4-1

Set of 4 Castors
Connects to most Racks

4 in 1 Hat Ring to Accompany
Chrome Tube and Base to Make a
Hat Stand

5 Prong Spinner Base
To fit 25mm Chrome Tube

Black

Hat Rings Also Come as Singles

Black

Cable



HC-1

Floor to Ceiling Cable Kit
3600mm Long

Chrome

HC-2

Single Sided Cable Clip
For Horizontal Shelving

Chrome

HC-3

Double Sided Cable Clip
For Horizontal Shelving

Chrome



HC-4

Single Sided Cable Clip
For Vertical Shelving

Chrome

HC-5

Double Sided Cable Clip
For Vertical Shelving

Chrome or Satin Chrome

HC-6

Acrylic Shelf For Cable
System
A4 or A3

Clear Acrylic



HC-8

Glass Shelving
800mm x 400mm
Or
400mm square

Clear

HC-9

Double Sided Cable Clip
Horizontal Slider
For Shelving

Chrome or Satin Chrome

HC-10

Single Sided Cable Clip
Vertical Slider
For Shelving

Chrome or Satin Chrome

Cable



Floor to Ceiling Cable Systems Can be Used to Give an Innovative Modern Look to your Shop Windows and Interiors. It is also great for Displaying items in the Middle of the Room Allowing your Customers a Full 360° View of your Merchandise.



Brochure System



PB1

Aluminium Wall Bracket
Available in any Size
Up To 4500mm

Anodized Aluminium



PB1-2

Horizontal Business Card
Holder for A Counter
60 x 94 x 23mm
Also Available in Clip-On

Clear Acrylic



PB1-3

Vertical Business Card
Holder Clip-On
90 x 58 x 23mm
Also Available as Counter

Clear Acrylic



PB1-8

Storage Unit
4 x A4 Holders
320 x 230 x 190mm

Clear Acrylic



PB1-11

Trifold Brochure Holder
210 x 105 x 23mm

Clear Acrylic



PB1-13

A5 Brochure Holder
210 x 150 x 23mm

Clear Acrylic



PB1-14

Horizontal Postcard Holder
100 x 170 x 16mm

Also Available in Vertical
Clear Acrylic



PB1-15

A4 Brochure Holder
297 x 210 x 23mm

Clear Acrylic



PB1-17

Universal Base Bracket
Used to Support Holders on a
Counter and Hold them Off a
Wall.

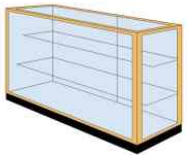
Clear Acrylic

Brochure System

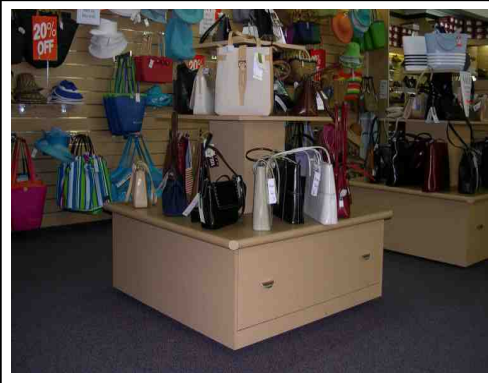


The Acrylic Brochure System Is a Great way of Utilising unused Wall Spaces and Can look Very Stylish and Contemporary. Portable Trolley Displays are Also Available and Are easy to Store When not in Use.

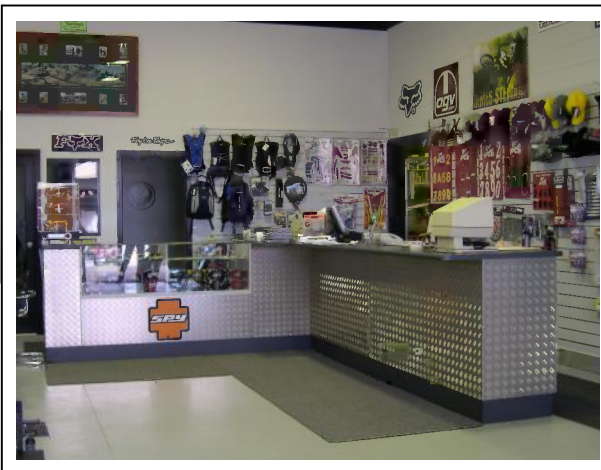




Gondolas



Southern Visual Concepts can assist you in designing and creating your own custom Gondolas. They can match the colours and lines of your shop interior and can enhance the overall look of your room.



For all Orders and Enquiries
Please Contact Us

Southern Visual Concepts

4 Acacia Close
Dalmeny NSW 2546

P/O Box 553
Narooma NSW 2546

Ph: 02 4476 7082
Fax: 02 4476 7083

Email: office@svejoinery.com.au

